

Power and Energy Meter PEM 710

A large 7" capacitive touch panel and clearly arranged menus make this device very comfortable and easy to handle.

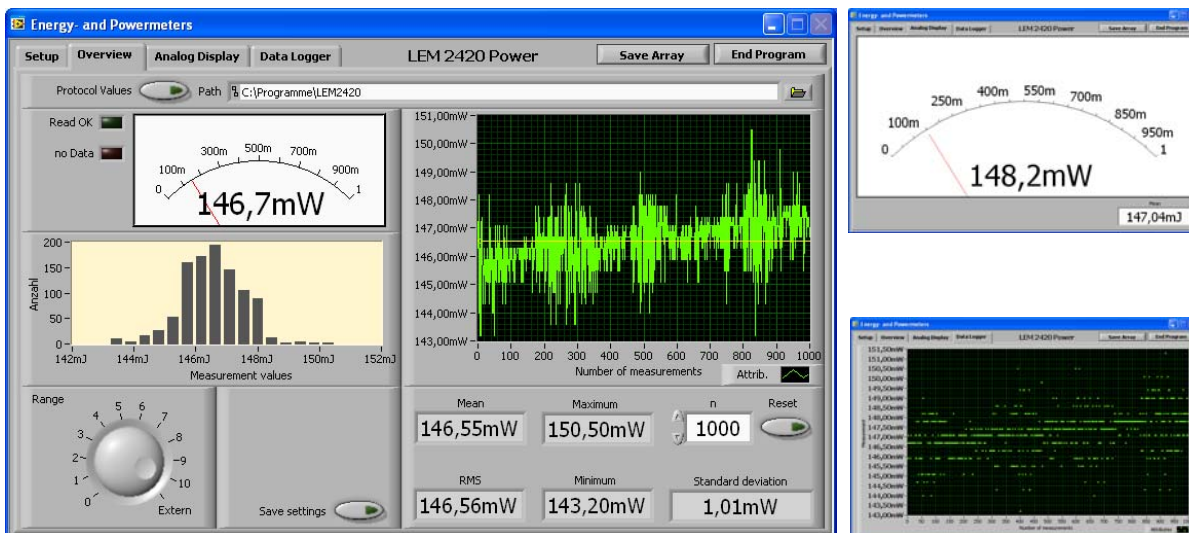
Very low noise amplifiers and for every signal path optimised AD converters, allow to use a wide range of sensor heads. After connecting a detector, the display read all relevant parameters from detector-EEPROM and setting up the device automatically. Manually setup possibilities for wavelength and correction are possible.

The large graphic display offers space for a variety of display and analysis choices. The digital display can be used for determining the energy, frequency and average power. The analogue part with its bar graph display is useful for e.g. laser adjustments. Laser stability can be monitored using the data logger and statistics window. Also a data logging window and a statistic window with histogram in selectable

The PEM 710 is equipped with USB interfaces. These ports allow remote control and transferring of all data to a PC or USB memory stick. An analogue output give a lot of possibility fo integration the display into own measurement arrangements.



- For pyroelectric energy sensor heads and thermopile power sensor heads
- Digital display, analogue display, graphic data logger, statistics and histogram
- HiRes 7" Graphic display with background illumination
- Wide dynamic range
- Input of correction factors e.g. for mirrors or beam splitters
- Wavelength correction
- Adjustable trigger level
- Analogue output
- Capacitive touch panel
- USB 2.0 interface for remote operation
- compatible to all heads of PEM, HP, LP and BB series
- In energy mode rep rates 1000 pps
- Data storage on USB memory stick
- Compatible with E-connector with integrated EEPROM with all detector parameters
- Dimension 220 mm x 190 mm x 57 mm



A Labview based software for displaying all via USB transferred data is also available. An overview window shows a small analog instrument, Histogram, data logger and also some statistical results. Additionally it is possible to save the showed data into a file.

For adjustment work it is possible to switch to the analog instrument or the data logger.

Some basic Labview VIs for own projects are available. Because of the simple data structure and the simulated COM-port it is very easy to implement the device in other programming languages or other operating systems.